

Powerful by nature.



JETI
BRONCO
H3300



| | |
|---------------------|-----------------------|
| Type | Hybrid inkjet printer |
| Speed | → → → → → |
| Width | Up to 330 cm – 130" |
| Colors | CMYKcm + W |
| Upgradable – speed | Yes |
| Upgradable – colors | No |

Wild horses roam free with grace and agility across vast plains. You'll find their indomitable spirit in the Bronco inkjet printer too. Saddle up for success with this hybrid inkjet printer offering breathtakingly beautiful print quality. Upgrade its horsepower for an even higher performance.

AGFA 

> A beast for every need

Whatever environment you operate in, whatever your markets or applications, whether seeking high productivity, quality, or versatility, we have the right beast for you. Our inkjet printers are powerful by nature, each with unique strengths built into its design. These beasts will deliver impressive results without compromise, boosting your business.

m²/h

ft²/h

p
r
i
n
t
e
r
s
p
e
e
d

7000
75 347

SpeedSet Orca 1060 | flatbed → → → → → →

1500
16 146

Onset Grizzly X HS | hybrid → → → → →

1000
10 764

Jeti Tauro H3300 | hybrid → → → → →

700
7 535

Jeti Condor RTR5200 | roll-to-roll → → → → →

400
4 306

Jeti Tauro H2500 | hybrid → → →

**JETI
BRONCO
H3300**



> Saddle up for success



→ → →

- > Hybrid inkjet printer
- > Up to 248 m²/h – 2669 ft²/h*
- > Up to 330 cm – 130 in
- > CMYKcm + white
- > Upgradable speed

*under development

Avinci CX3200 | roll-to-roll textile → →

Jeti Mira MG2716/2732 | flatbed → →

Oberon RTR3300 | roll-to-roll → →

200
2 153

Anapurna Ciervo H3200 | hybrid → →

Anapurna | hybrid printer series →

Anapurna RTR3200 | roll-to-roll →

100
1 076

Anapurna FB2540 | flatbed →

> Why Agfa

Inkjet experts

We are a leading company in imaging technology and IT solutions with over 150 years of experience. We have been developing and manufacturing state-of-the-art inkjet printing systems for over two decades, empowering print service providers to become both more versatile and efficient.

Best cost of ownership

Inks, print heads, substrates, and color management software are perfectly tuned to each other to guarantee spot-on print quality, reliable production, low consumable usage and limited maintenance. In sum: we guarantee you the best possible cost of ownership.

One-stop shop

Opt for peace of mind with a complete solution from a single supplier: printer, software, inks, service and support. We even offer attractive financing options.

Spot-on inks

- > Large color gamut and high vibrancy
- > Low ink consumption thanks to Thin Ink Layer technology
- > Reliable jetting & batch-to-batch consistency
- > Resistant to wear and tear
- > Highly opaque white
- > Primer option for difficult media
- > Compliant with health & environment standards, including GREENGUARD Gold



Asanti workflow & color management

- > Streamlines the printing process from prepress to production
- > Guarantees error-free job handling and consistent color reproduction
- > Parameter-based Calibrated Print Modes enable automatic job creation
- > Production Dashboard offers overview of job status, and ink and media consumption
- > Includes latest Adobe PDF Print Engine

More software options:

- > **Asanti StoreFront**
cloud-based web-to-print solution
- > **PrintSphere**
cloud-based file sharing
- > **PrintTune**
print standardization

World-class training and support

- > Expert support worldwide minimizes downtime with fast response times and remote troubleshooting capabilities
- > Comprehensive training during setup and production, tailored to your needs
- > Your feedback shapes our partnership

Find your local sales & support team: www.agfa.com/printing/worldwide



> Why the Bronco is the right beast for you

The Jeti Bronco H3300 wide-format hybrid printer is designed for sign shops and digital printers looking for a combination of versatility, productivity, and excellent print quality. With a 3.3-meter print width, UV LED curing, and a six-color plus white ink set, this print engine is a perfect fit for a wide range of indoor and outdoor print applications.

- > Versatile printer that tackles a wide range of rigid and roll media for indoor and outdoor applications
- > Productivity enhanced through efficient continuous board feeding & multiple board printing (up to 4 boards simultaneously)
- > Single-roll printing up to 3.3 meter wide – independent dual-roll printing up to 1.6 meter wide
- > Borderless printing limits post-finishing requirements
- > Pre-white, sandwich white and post-white in one run
- > Built on an industrial framework tailored for enduring steady workloads
- > Printer technology and graphical user interface based on our Jeti Tauro high-end printing solutions
- > Perfect interaction between Asanti workflow software and the printer yields exceptional image quality
- > GREENGUARD Gold-certified inks with wide color gamut
- > Field-upgradeable from a two- to a four-row engine

A wide range of applications

The Jeti Bronco H3300 revolutionizes your business with unparalleled versatility across a spectrum of applications. This hybrid printer excels in producing high-quality prints on uncoated rigid media such as exhibition panels, stage graphics and advertising boards, as well as on roll media like film, vinyl, banners, canvas and coated textiles. UV LED lamps broaden the range of printable media to e.g. thin, heat-sensitive foils, as well as PET or microflute.



The printer's adaptability also extends to niche products and enables diverse creative expressions and applications in architectural and interior decoration. The white ink function lets you print on transparent materials for backlit applications or use white as a spot color.

> Saddle up
for success





> Roam free and venture into new territory

Jeti Bronco H3300

> STANDOUT FEATURES



Smart Ink Management

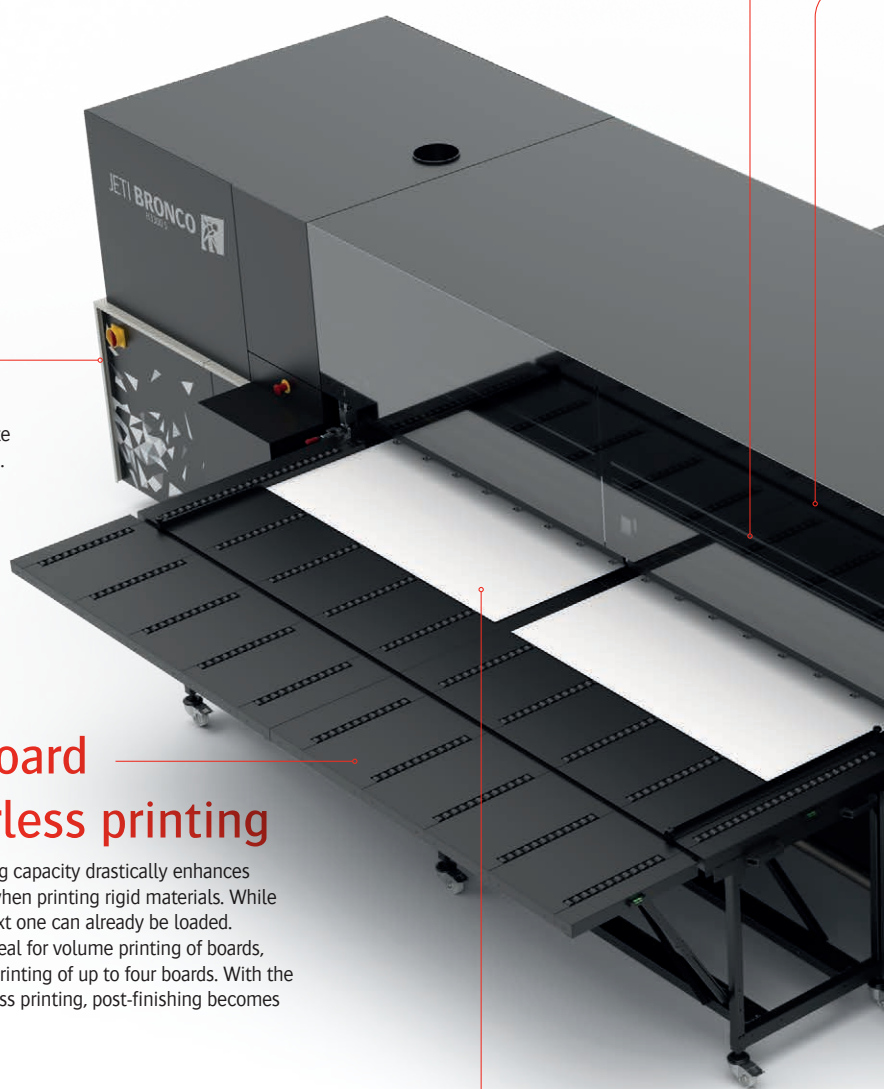
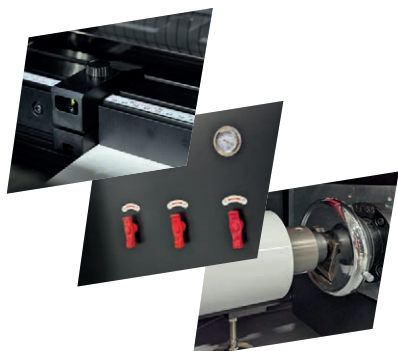
Throughout production, the automatic ink management system diligently monitors ink levels. A separate system manages the white ink, overseeing circulation, under-pressure regulation, and cleaning. The white ink tank is also equipped with a stirring mechanism to maintain optimal ink consistency through continuous mixing.

The ink refill system is conveniently accessible, allowing for clean and straightforward refilling of the ink containers. RFID tags on the ink bottles ensure accurate and hassle-free refilling of ink containers, even during printing.



Multiple board and borderless printing

The continuous board feeding capacity drastically enhances efficiency and productivity when printing rigid materials. While one board is printing, the next one can already be loaded. This automated process is ideal for volume printing of boards, enabling the simultaneous printing of up to four boards. With the added advantage of borderless printing, post-finishing becomes unnecessary.



LED curing

Powerful air-cooled UV LED lights offer substantial energy savings and are well-suited for heat-sensitive materials, thanks to their low energy output. This makes them ideal for printing thin slides, self-adhesive sheets, or stretched PVC materials.

Flawless media handling

The printer guarantees precise media loading with automated functionalities embedded in the GUI, such as the **media registration** bar and head height adjustment.

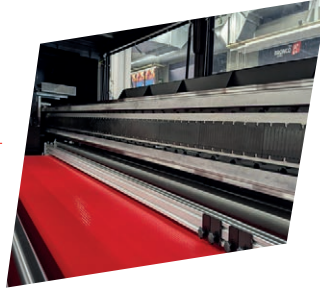
A **vacuum system** intelligently controlled across four zones maintains consistent vacuum levels throughout the printing process, whether printing on flexible or rigid materials.

In addition, the printer is equipped with **inflatable airshafts** for unwinding and rewinding, complemented by a rewinding tension roller, ensuring excellent material tension and wrinkle-free prints. The carbon-made rear shaft is both lightweight for operator comfort and robust for efficient performance.



Single- or dual-roll printing

A single roll can be as wide as 3.3 meters, whereas in dual printing mode, each roll can be up to 1.6 meters wide. Switching between single- and dual-roll printing modes is straightforward, and the rolls can even have different diameters when printing in dual-roll mode.



Shuttle beam with linear motor

A robust beam with a powerful and precise linear motor provides smooth and silent movement of the print shuttle, ensuring exceptional accuracy in dot placement and delivering outstanding image quality. A set of shuttle safety sensors prevents print heads from touching the substrate and getting damaged.

Ionizer

An ionization bar mounted on the carriage removes electrostatic charges on the substrate, ensuring optimum ink droplet placement.

Small and large media tables

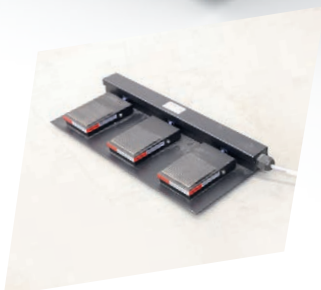
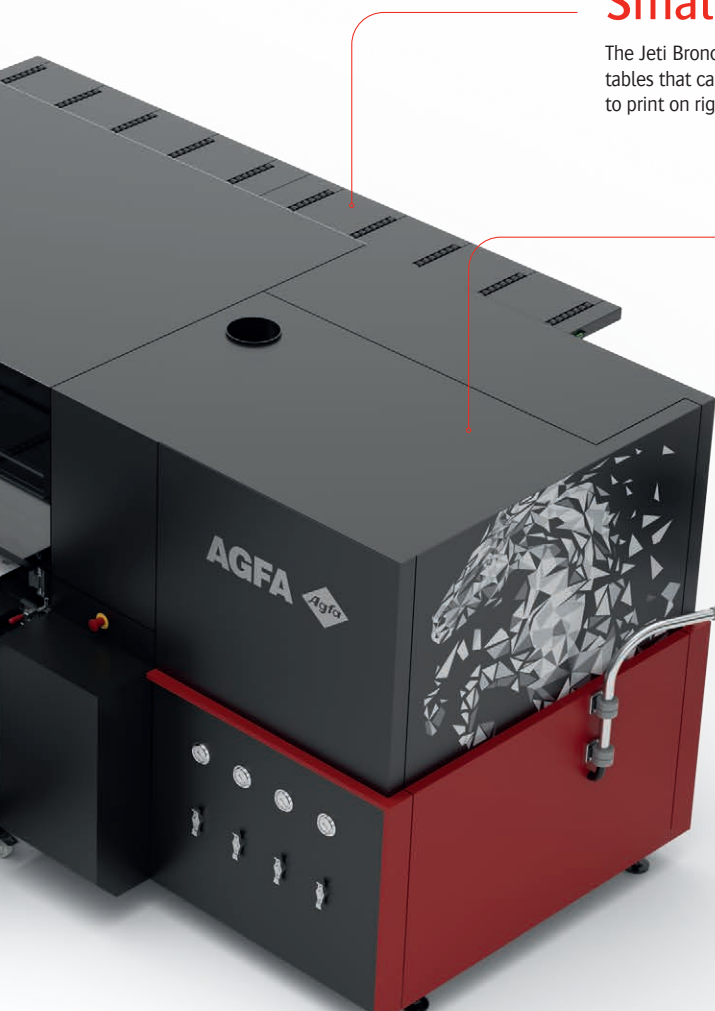
The Jeti Bronco H3300 comes standard with an additional set of large media tables that can be coupled to the default smaller tables. This makes it possible to print on rigid materials up to a length of 3.2 m.

Protective closure

The safety hood covers the print belt and shuttle, eliminating any potential risks of harm to operators.

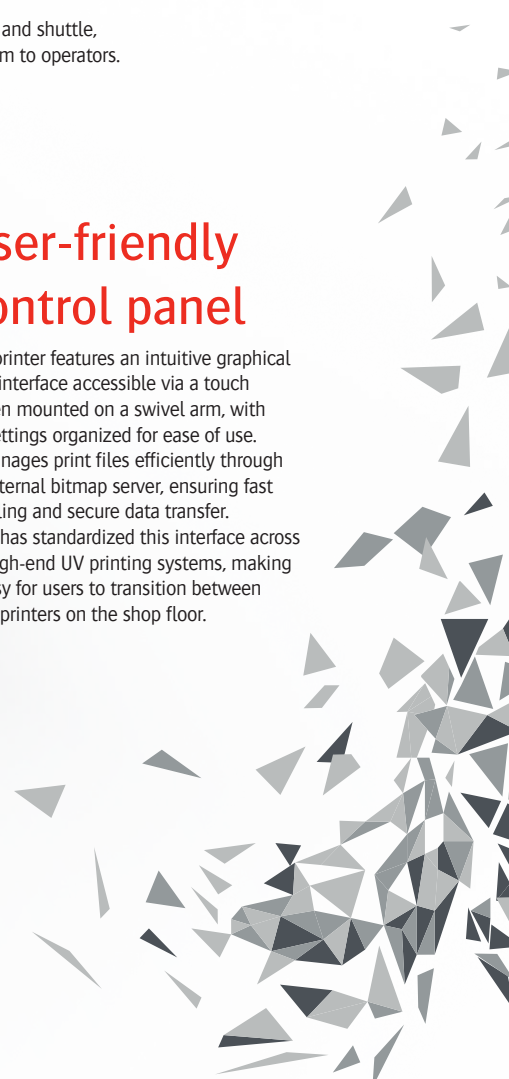
User-friendly control panel

The printer features an intuitive graphical user interface accessible via a touch screen mounted on a swivel arm, with all settings organized for ease of use. It manages print files efficiently through an internal bitmap server, ensuring fast spooling and secure data transfer. Agfa has standardized this interface across all high-end UV printing systems, making it easy for users to transition between Agfa printers on the shop floor.



Pedal controlled

The start of the printing, the vacuum of the belt and the movement of the belt can all be controlled by easy-to-use pedals.



> Upgrade your horsepower

Specifications Jeti Bronco H3300

| PRODUCTIVITY | |
|--|--|
| Express Mode | Up to 150 m ² /h (1,615 ft ² /h) |
| Production Mode | 75 - 100 m ² /h (807 - 1076 ft ² /h) |
| Standard Mode | 42 - 60 m ² /h (452 - 646 ft ² /h) |
| High Quality Mode | Up to 25 m ² /h (269 ft ² /h) |
| MEDIA & PRINTING SPECIFICATIONS | |
| RIGID MEDIA | |
| Maximum width | 330 cm (130") 320 cm (126") with borderless printing |
| Maximum length | Supported by 1 rigid roller table: 192 cm (75.6 in) Supported by 1 rigid roller table + media extension table (default): 320 cm (126 in) |
| Minimum size | A2 landscape (60 x 42 cm – 23.6 x 16.5") |
| Thickness | Minimum thickness: 0.2 mm (0.008") Maximum thickness: 50 mm (1.97") |
| Maximum weight | 10 kg/m ² on printing table (22 lb) |
| FLEXIBLE MEDIA | |
| Maximum width | 330 cm (130") 320 cm (126") with borderless printing |
| Maximum length | n/a – restricted by weight and diameter |
| Thickness | Min. 0.2 mm (0.08") |
| Maximum weight | 0.31 kg (0.682 lb) per cm (0.4" in roll width, meaning 160 kg (353 lb) evenly distributed over the full 3.3 m (130") width |
| Maximum roll outside diameter | Support for 3" core media rolls – maximum media roll diameter 35 cm (13.8") |
| PRINT HEADS & INKS | |
| Print heads | Ricoh heads |
| Inks | CMYKcm + white |
| IMAGE & TEXT QUALITY | |
| High-quality prints | Up to 635 x 2400 dpi |
| Text quality | Positive: 4 point / Negative: 6 point |
| ENGINE DIMENSIONS & HEIGHT | |
| Printer dimensions (H x W x L) | 201 x 717 x 214 cm (79 x 282 x 84") |
| Weight | 5,100 kg (11,244 lb) |
| ELECTRICITY & COMPRESSED AIR | |
| Electricity | 380 V 3-phase star connection with Neutral wire (3 x 32 A) 50/60Hz 230V 3-phase delta connection without Neutral wire (3 x 32 A) 50/60 Hz |
| Compressed air | Oil free (class 1 according to ISO 8573-1 2010), 160 L/min compressor with 50 l barrel @6bar |
| SYSTEM INTEGRATION RIP/WORKFLOW SOFTWARE | |
| | Integrated production solution with Asanti workflow software. |

> Get a demo or print sample pack!

